



FIFA

For the Game. For the World.



Law 7 The Duration of the Match



Topics

2

- Additional Time



The referee decides on the time lost in each period.

An allowance is made in either period for the time lost through:

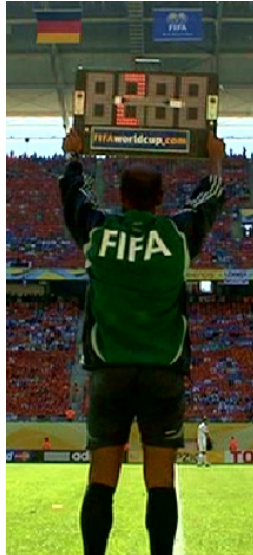
- **substitutions**
- **the assessment of players' injuries**
- **the removal of injured players from the field of play for treatment**
- **time-wasting**
- **when the play is stop for different reasons (e.g. critical weather conditions, goalpost broken, floodlights failure)**



Many stoppages in play are entirely natural (e.g. throw-ins, goal kicks)

An allowance is to be made only when these delays are excessive.

The referee shall not compensate for a timekeeping error during the first half by increasing or reducing the length of the second half.



The fourth official indicates the minimum additional time decided by the referee at the end of the final minute of each period of play.

The announcement of the additional time does not indicate the exact amount of time left in the match. The time may be increased if the referee considers it appropriate but never reduced.